

Lockwood Place

240xx Lockwood Place, Bothell

17 RESIDENTIAL BUILDING LOTS
(Plat Has Been Recorded)

**3 Acres of Native Growth
Protection Area**

**Jurisdiction
Snohomish County**

**Water/Sewer
Alderwood**

Northshore School District

**Average Lot Size
3480 ASF**

**Approximate Lot Dimensions
45x80**

\$2,890,000

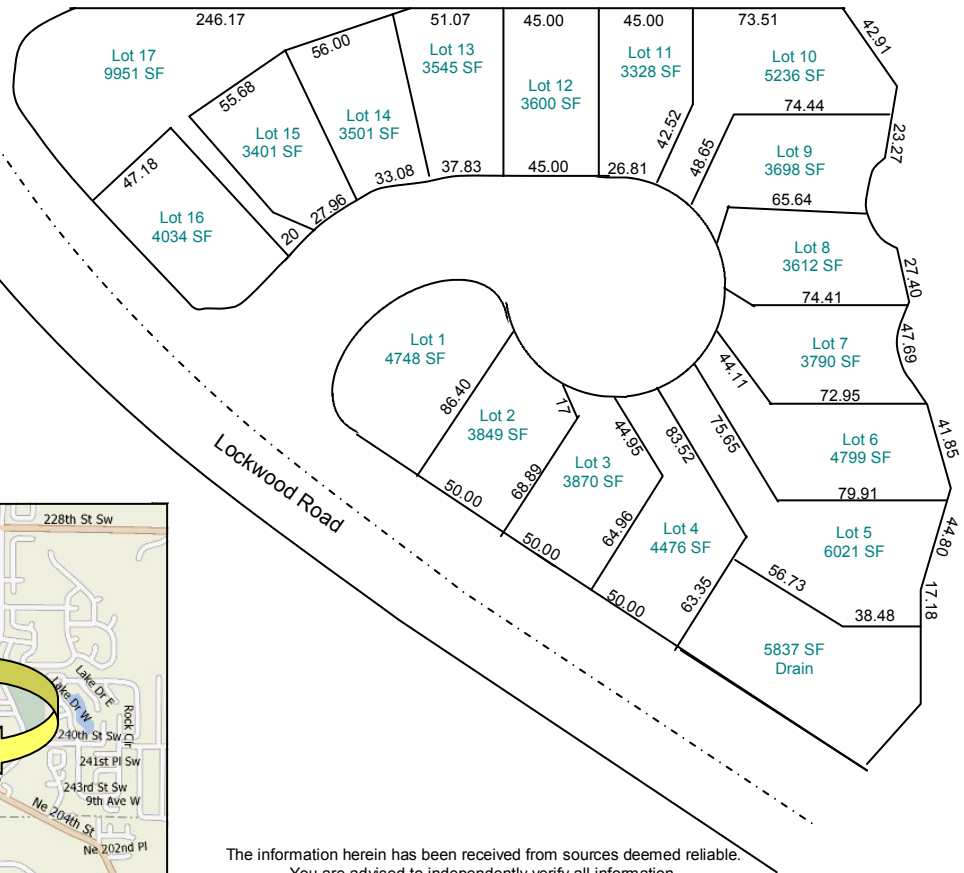
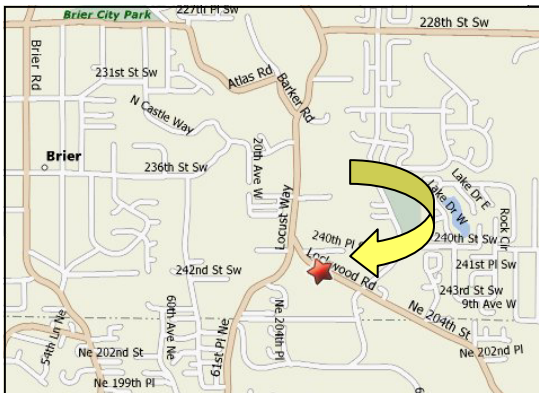
NWMLS #:28058357



Larry Hinrichs
Brier Realty Inc.
206-948-4507

**See our Website
For a Detailed
Plat Map
And Other
Pertinent Information**

**Thomas Brothers
Map: 475 Grid: J3**



The information herein has been received from sources deemed reliable.
You are advised to independently verify all information.

www.BrierRealtyNewHomes.com