

Lockwood Place

240xx Lockwood Place, Bothell

17 RESIDENTIAL BUILDING LOTS
(Plat Has Been Recorded)

3 Acres of Open Space

Jurisdiction
Snohomish County

Water/Sewer
Alderwood

Northshore School District

Average Lot Size
3480 ASF

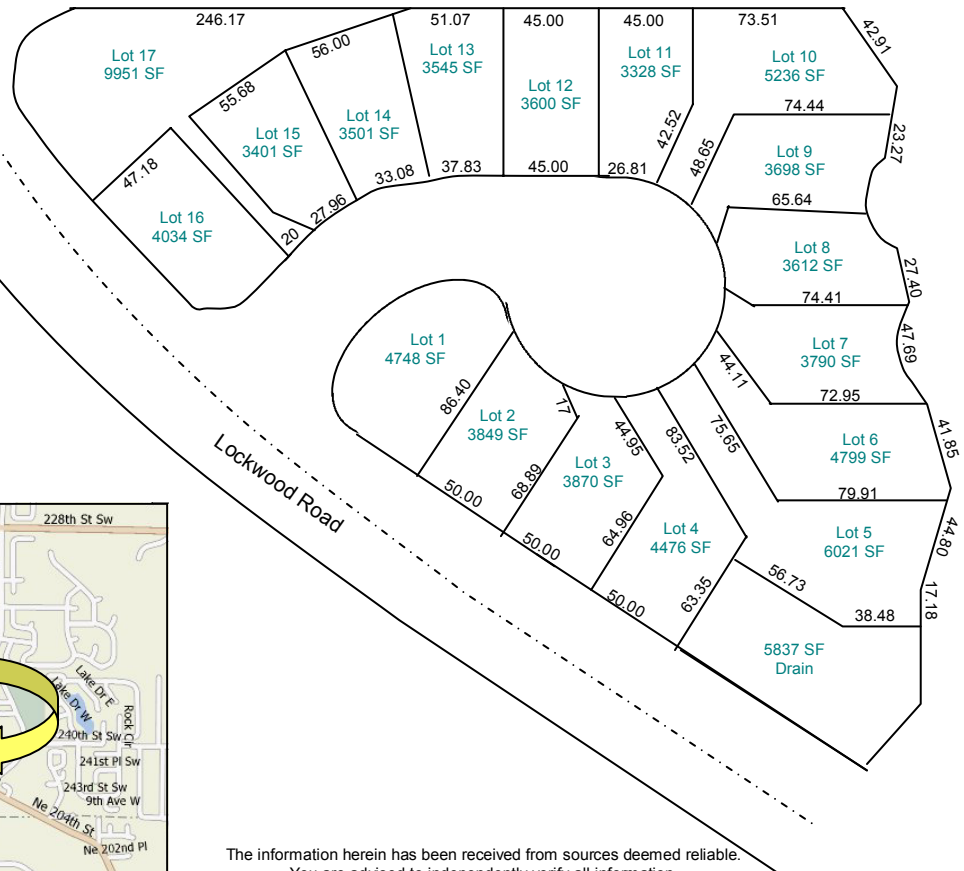
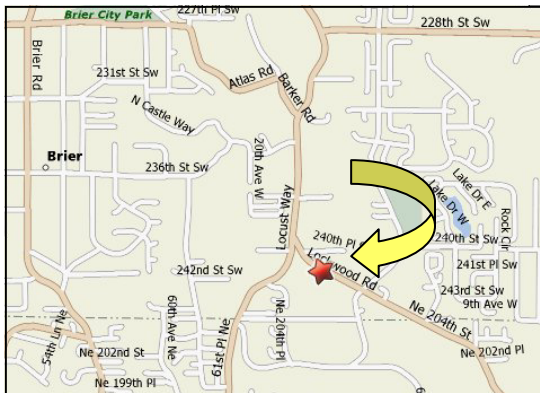
Approximate Lot Dimensions
45x80



Larry Hinrichs
Brier Realty Inc.
206-948-4507

**See our Website
For a Detailed
Plat Map
And Other
Pertinent Information**

**Thomas Brothers
Map: 475 Grid: J3**



The information herein has been received from sources deemed reliable.
You are advised to independently verify all information.

www.BrierRealtyNewHomes.com