

# Ashbrooke PRD

201st St. SW & S. Danvers Rd, Lynnwood

90 LOTS

Available for Closing Now

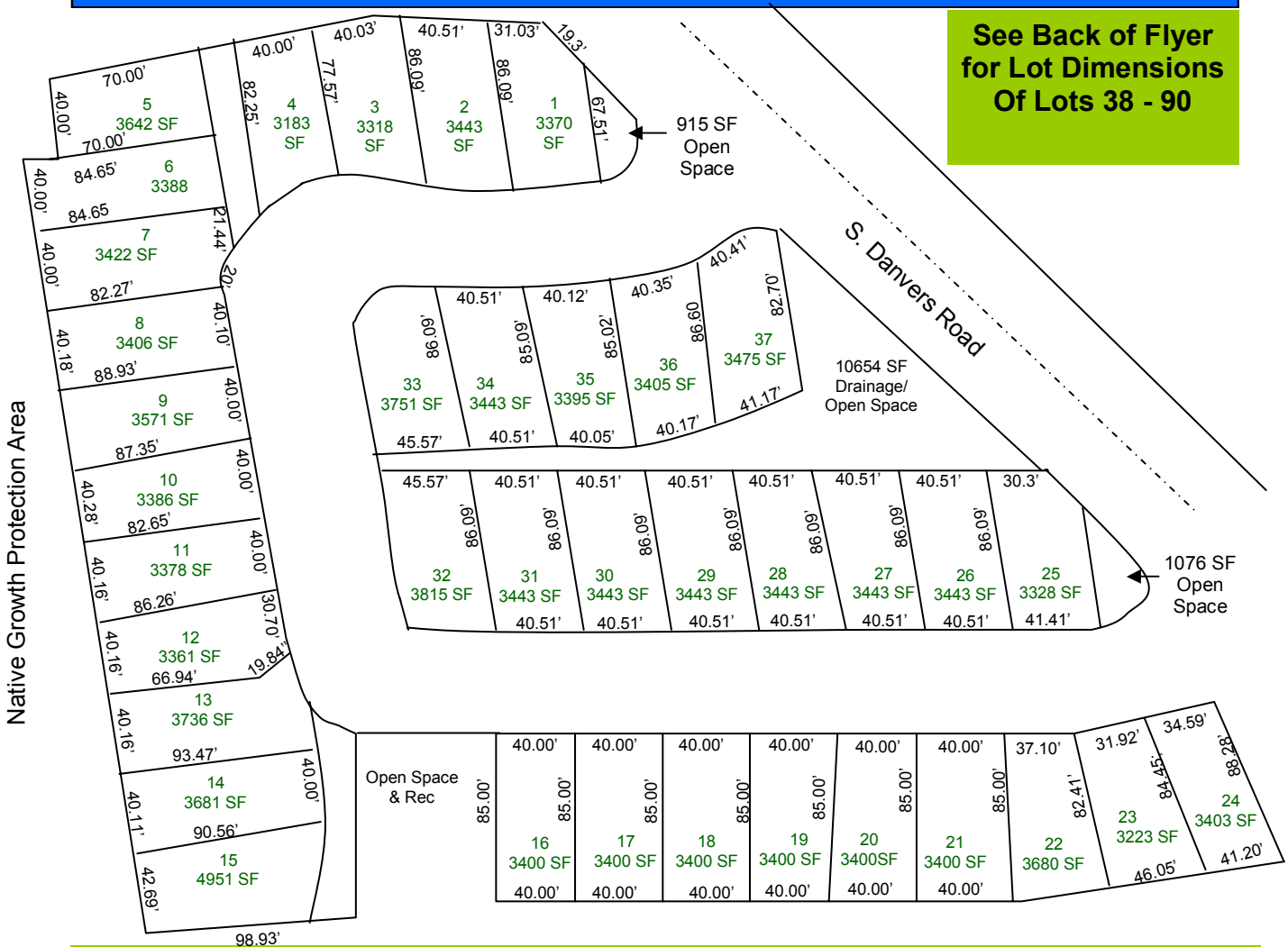
**\*\* Final Drawings Approved \*\***

Highlights:

- Average Lot Area: 3,626 Sq. Ft.
- Lot Widths: 40' Typical
- School District: Edmonds
- Lead Jurisdiction: Snohomish Cty.
- Water/Sewer: Alderwood
- Staff Comments: Available



Larry Hinrichs  
Brier Realty Inc.  
206-948-4507



See Back of Flyer  
for Lot Dimensions  
Of Lots 38 - 90

